

# Bluebox/Western ALFA ST 141

## Specifications

Brand	Bluebox/Western
Type	ALFA ST 141
Product type	Air Cooled Chiller
Capacity kW	34.5
Capacity Tons	9.8
Refrigerant	Freon
Refrigerant Type	R422D
Liquid buffer tank	✓
Pump	✓
Sizes	1700x1060x1410 mm (LxWxH)
Compressor(s) type & model	copeland ZR16M3-TWD-551
Display	U chiller
Number of fans	2
Fan specifications	130V // 850 RPM // 2.4/2.7 A Max
Remarks	Y.o.b. 1998
Stock	1



## Description

### Used Bluebox/Western ALFA ST 141

Used, but in good condition, Bluebox/Western ALFA ST 141 Air Cooled Waterchiller, built in 1998. This used waterchiller has 1 Compressor Copeland ZR16M3-TWD-551 a pump and a liquid buffer tank containing 200 liter. With 2 fans with an airflow of 11088 m<sup>3</sup>/h (3.080 m<sup>3</sup>/s) \*All components of this used chiller will be tested on good working, leak free condition (condensing blocks), compressors, fans, control panel, etcetera). Choosing HOSBV means buying with warranty. We perform an industrial cleaning and rust spots will



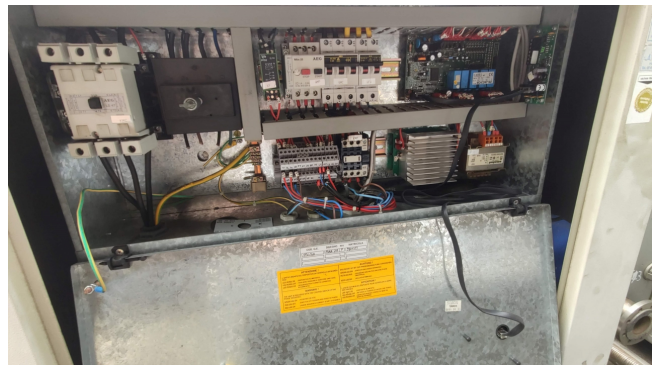
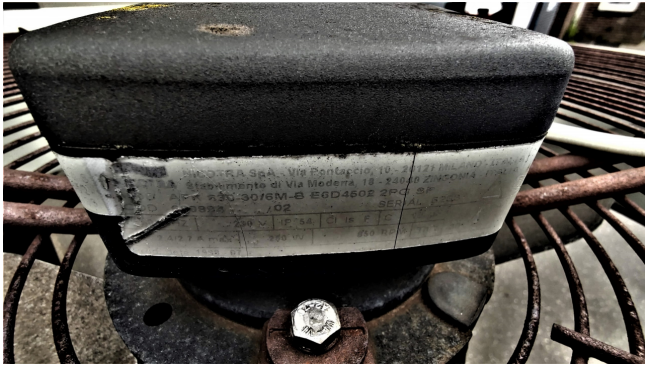
be covered. Also, we can arrange your shipment.

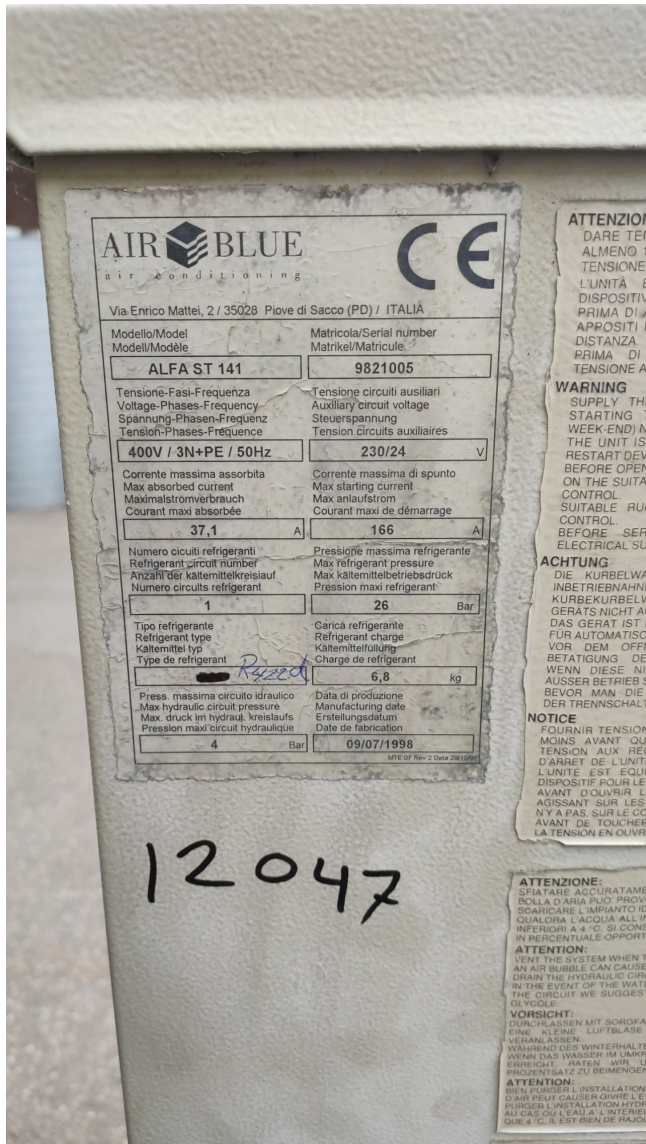












## Dati tecnici / Technical data

Grandezza unità / Unit size		91	101	141	161
Potenza frigorifera meccanica / Mechanical cooling capacity (1)	kW	20,6	26,7	34,5	39,3
Potenza assorbita compressore / Compressor power input (1)	kW	6,8	9,4	10,9	13,6
Alimentazione elettrica unità / Unit power supply	V/ph/Hz	400/3+N50	400/3+N50	400/3+N50	400/3+N50
Massima potenza assorbita / Maximum absorbed power (*)	kW	9,8	12,4	15,7	18,8
Corrente massima assorbita / Full load current (**)	A	28,6	31,3	41,0	42,6
Corrente di spunto / Max starting current	A	99,6	132,6	164,0	194,0
Potenza frigorifera in free-cooling / Free-cooling capacity (2)	kW	12,2	13,0	20,8	21,4
Portata miscela acqua - glicole / Water - glycol mixture flow	l / s	1,10	1,43	1,85	2,10
Carica refrigerante R 22 / R 22 refrigerant charge	kg	16,0	17,0	19,0	19,0
Compressori / Compressors					
Tipo / Type	/	Ermetico Scroll / Scroll			
N° x Carica olio / N° x Oil charge	n° x lt	1 x 2,5	1 x 4,0	1 x 4,0	1 x 4,0
Condensatore / Condenser					
Tipo / Type	/	Batteria alettata / finned coil			
Superficie frontale / Frontal area	m²	1,000	1,000	1,677	1,677
Batteria free-cooling / Free-cooling coil					
Tipo / Type	/	batteria alettata / finned coil			
Superficie frontale / Frontal area	m²	1,000	1,000	1,677	1,677
Ventilatori / Fans					
Tipo / Type	/	Assiali / Axial			
Portata aria / Air flow	m³/s	1,722	1,653	3,080	3,080
N° x potenza installata / N° x Nominal power input	n° x kW	1 x 53	1 x 53	2 x 53	2 x 53
N° x corrente nominale motore / N° x Nominal absorbed current	A	1 x 24	1 x 24	2 x 24	2 x 24
Evaporatore / Evaporator					
Tipo / Type	/	Piastre / Plate			
Contenuto d'acqua serbatoio / Storage tank water volume	l	100	100	200	200
Attacchi idraulici / Hydraulic connections	Æ BSP F	1"1/4	1"1/4	1"1/4	1"1/4
Potenza nominale pompa / Pump nominal power	kW	0,9	0,9	1,5	1,5
Corrente nominale motore pompa / Pump nominal absorbed current A	A	2,2	2,2	3,8	3,8
Alimentazione elettrica pompa / Pump power supply	V/ph/Hz	400/3/50	400/3/50	400/3/50	400/3/50
Prevalenza utile / Available pressure	kPa	120	115	120	115
Dimensioni / Dimensions					